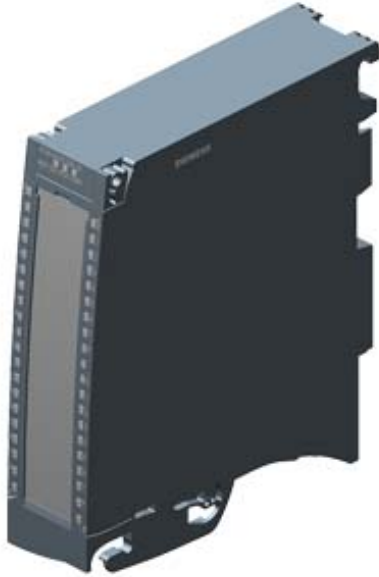


SIMATIC S7-1500, DIGITAL OUTPUT MODULE DQ 32 X 24V DC/0.5A HF; 32 CHANNELS IN GROUPS OF 8, 4 A PER GROUP; SINGLE-CHANNEL DIAGNOSIS; SUBSTITUTE VALUE



General information	
Product type designation	DQ 32x24VDC/0.5A HF
HW functional status	FS01
Firmware version	V1.0.0
Product function	
<ul style="list-style-type: none"> <li>I&amp;M data</li> </ul>	Yes; I&M0 to I&M3
Engineering with	
<ul style="list-style-type: none"> <li>STEP 7 TIA Portal configurable/integrated as of version</li> </ul>	V13 SP1 / -
<ul style="list-style-type: none"> <li>PROFIBUS as of GSD version/GSD revision</li> </ul>	V1.0 / V5.1
<ul style="list-style-type: none"> <li>PROFINET as of GSD version/GSD revision</li> </ul>	V2.3 / -
Operating mode	
<ul style="list-style-type: none"> <li>DQ</li> </ul>	Yes
<ul style="list-style-type: none"> <li>DQ with energy-saving function</li> </ul>	No
<ul style="list-style-type: none"> <li>PWM</li> </ul>	No
<ul style="list-style-type: none"> <li>Oversampling</li> </ul>	No
<ul style="list-style-type: none"> <li>MSO</li> </ul>	Yes
Supply voltage	

Rated value (DC)	24 V
permissible range, lower limit (DC)	20.4 V
permissible range, upper limit (DC)	28.8 V
Reverse polarity protection	Yes; through internal protection with 7 A per group
<b>Input current</b>	
Current consumption, max.	60 mA
<b>Output voltage</b>	
Rated value (DC)	24 V
<b>Power</b>	
Power available from the backplane bus	1.1 W
<b>Power loss</b>	
Power loss, typ.	3.5 W
<b>Digital outputs</b>	
Number of digital outputs	32
Current-sourcing	Yes
Short-circuit protection	Yes; Clocked electronically
• Response threshold, typ.	1 A
Limitation of inductive shutdown voltage to	L+ (-53 V)
Controlling a digital input	Yes
<b>Switching capacity of the outputs</b>	
• with resistive load, max.	0.5 A
• on lamp load, max.	5 W
<b>Load resistance range</b>	
• lower limit	48 $\Omega$
• upper limit	12 k $\Omega$
<b>Output voltage</b>	
• for signal "1", min.	L+ (-0.8 V)
<b>Output current</b>	
• for signal "1" rated value	0.5 A
• for signal "1" permissible range, max.	0.5 A
• for signal "0" residual current, max.	0.5 mA
<b>Output delay with resistive load</b>	
• "0" to "1", max.	100 $\mu$ s
• "1" to "0", max.	500 $\mu$ s
<b>Parallel switching of two outputs</b>	
• for logic links	Yes
• for uprating	No
• for redundant control of a load	Yes
<b>Switching frequency</b>	
• with resistive load, max.	100 Hz

• with inductive load, max.	0.5 Hz; According to IEC 60947-5-1, DC-13
• on lamp load, max.	10 Hz
<b>Total current of the outputs</b>	
• Current per channel, max.	0.5 A; see additional description in the manual
• Current per group, max.	4 A; see additional description in the manual
• Current per module, max.	16 A; see additional description in the manual
<b>Cable length</b>	
• shielded, max.	1 000 m
• unshielded, max.	600 m
<b>Isochronous mode</b>	
Isochronous operation (application synchronized up to terminal)	Yes
Execution and activation time (TCO), min.	70 µs
Bus cycle time (TDP), min.	250 µs
<b>Interrupts/diagnostics/status information</b>	
Diagnostics function	Yes
Substitute values connectable	Yes
<b>Alarms</b>	
• Diagnostic alarm	Yes
<b>Diagnostic messages</b>	
• Monitoring the supply voltage	Yes
• Wire-break	Yes
• Short-circuit	Yes
• Group error	Yes
<b>Diagnostics indication LED</b>	
• RUN LED	Yes; Green LED
• ERROR LED	Yes; Red LED
• Monitoring of the supply voltage (PWR-LED)	Yes; Green LED
• Channel status display	Yes; Green LED
• for channel diagnostics	Yes; Red LED
• for module diagnostics	Yes; Red LED
<b>Potential separation</b>	
<b>Potential separation channels</b>	
• between the channels	No
• between the channels, in groups of	8
• between the channels and backplane bus	Yes
<b>Isolation</b>	
Isolation tested with	707 V DC (type test)
<b>Decentralized operation</b>	
Prioritized startup	Yes

## Dimensions

Width	35 mm
Height	147 mm
Depth	129 mm

## Weights

Weight, approx.	280 g
-----------------	-------

**last modified:** 12/01/2016